

SCHEME "B" SITE PLAN

SCALE : 1" = 10'

PREPARED BY PAUL HOFFMAN

4539 ADAMS STREET
PLANNED UNIT DEVELOPMENT
GARDEN CITY, IDAHO

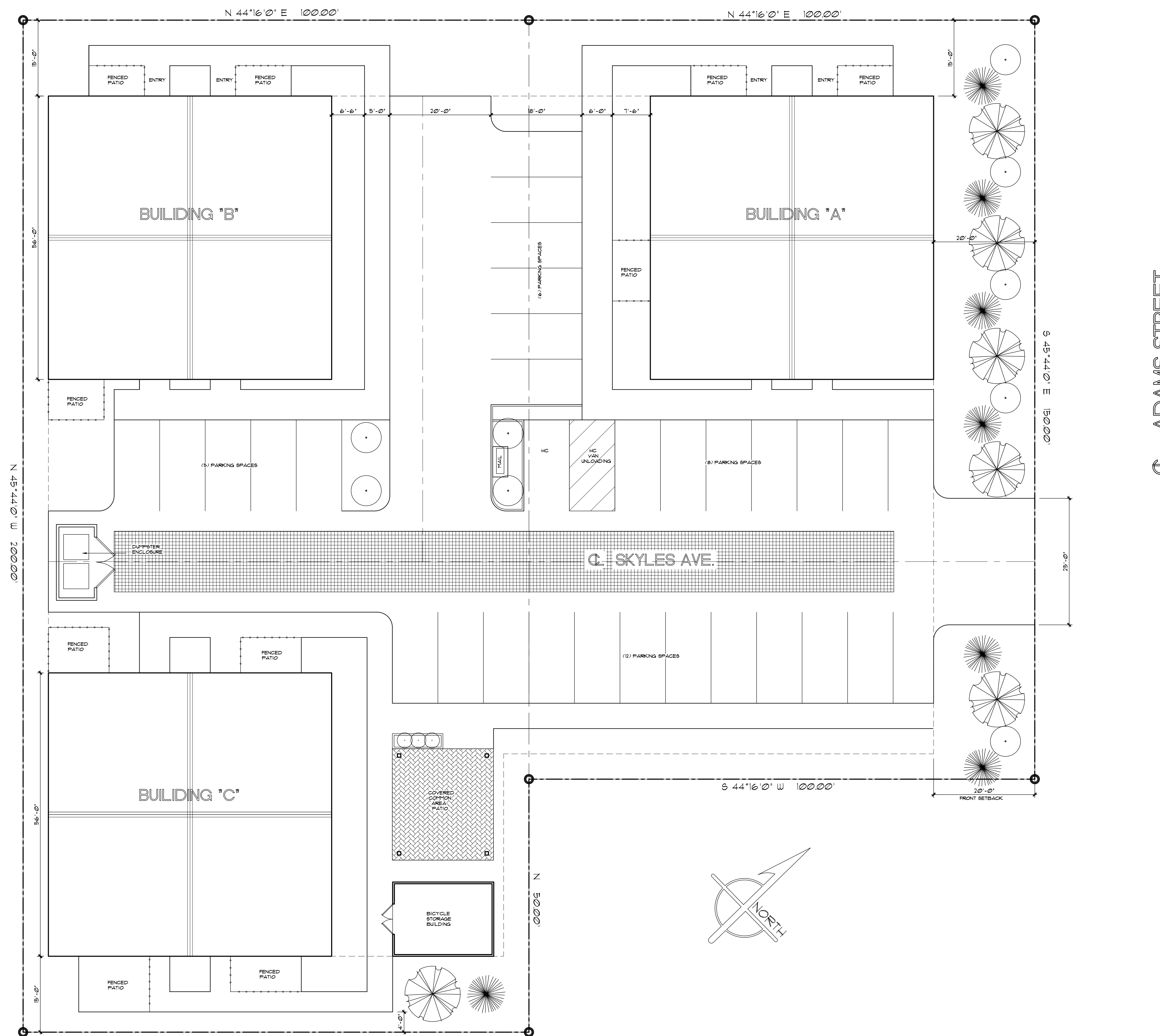
LEGAL DESCRIPTION

4529 ADAMS STREET:
NW 1/2 LOT 17 BLK. 1 EXC R/W
FAIRVIEW ACRES SUB.
PARCEL # R2734500168
ZONING CODE R-3
T4N, 2E, SEC 31
AREA: 0.333 AC

4539 ADAMS STREET:
PAR #0612 OF LOT 16 BLK. 1
FAIRVIEW ACRES SUB.NO. 1
PARCEL # R2734500162
ZONING CODE R-3
T4N, 2E, SEC 31
AREA: 0.46 AC

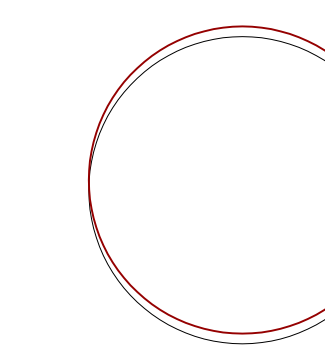
STATISTICS:

SITE DEVELOPMENT AREA:	35,000 S.F.
TYPICAL BLDG.	3,136 S.F.
TYPICAL UNIT	1073 S.F.
AMENITIES:	
BICYCLE STORAGE BLDG.	293 S.F.
COV. COMMON PATIO/PLAZA	440 S.F.
PARKING REQUIRED: 12 X 2 = 24 SPCS	
	(1) HC. SPACE
PARKING PROVIDED: 30 SPCS	
	(1) HC. SPACE



SITE PLAN

- PRESCRIBED REQUIREMENTS PER IRC 2009
- IDAHO LICENSED ENGINEER



SKYWARD PROPERTIES
ADAMS STREET DEVELOPMENT
4539 ADAMS STREET, GARDEN CITY, 83846



PRELIMINARY
NOT FOR CONSTRUCTION PURPOSES

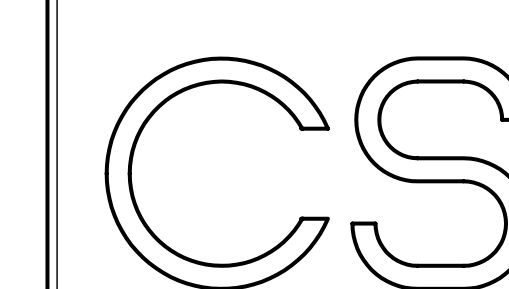


"NEW VILLAGES"
ARCHITECTURAL DESIGN, DRAFTING, PLANNING

325 MOUNTAIN VIEW DRIVE
BOISE, IDAHO 83704
(208)-863-1279
email: hoffman3409@msn.com

PAUL A. HOFFMAN

DRAWN BY: PAH
DATE: 5-19-16
REV: 5-26-16
JOB #: 051916A
CHECKED BY: PAH



M1 24x36 1

03:45:56

12/2005 #5336